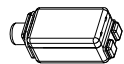
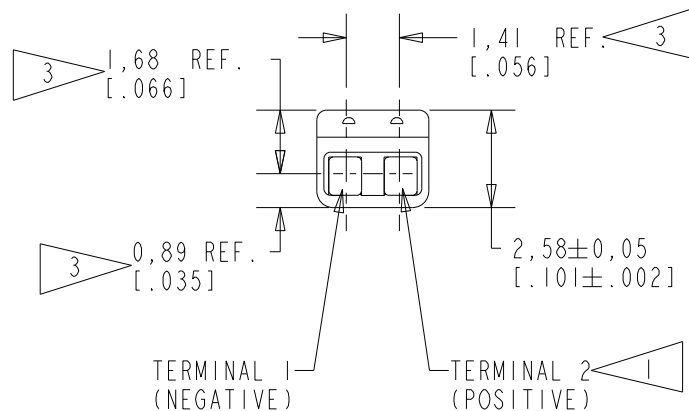
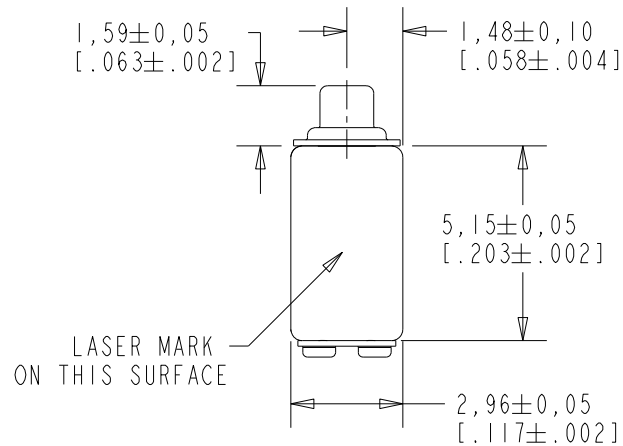


RAB-32057-000

SHT 1.1

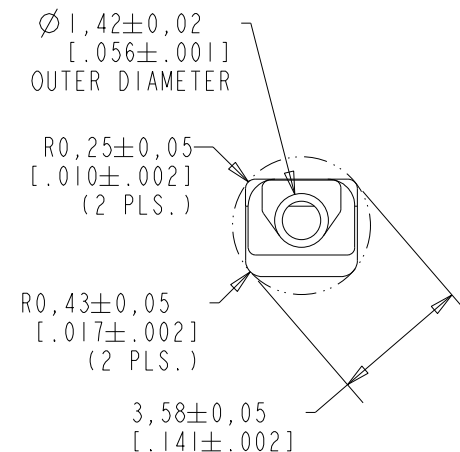
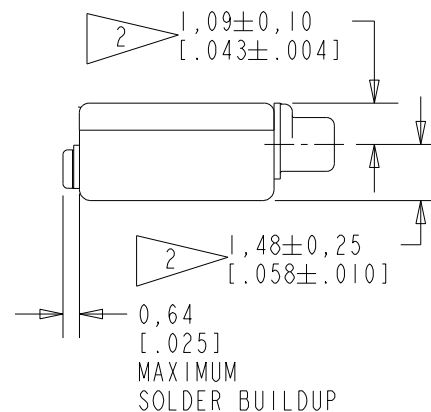


SCALE 2:1  
NOMINAL WEIGHT  
.16 GRAMS

DIMENSIONS IN MILLIMETERS [INCHES]

**KNOWLES CORPORATION**

- NOTE:
- 1 A POSITIVE GOING VOLTAGE AT TERMINAL 2, RELATIVE TO TERMINAL 1, CAUSES A DECREASE IN PRESSURE AT THE SOUND OUTLET.
  - 2 LOCATED FROM TWO SURFACES FOR CUSTOMER CONVENIENCE. ONLY APPLICABLE FROM ONE SURFACE, NOT TO BE USED TOGETHER.
  - 3 DIMENSION TO APPROXIMATE CENTER OF TERMINAL PAD.



Revision	C.O. #	Implementation Date	RELEASE LEVEL	REVISION
C	PI0001411	5-2-17	Active	C
B	C2.226714	3-26-15		
A	CI0115003	8-8-13		

SCALE: 5:1

DO NOT SCALE DRAWING

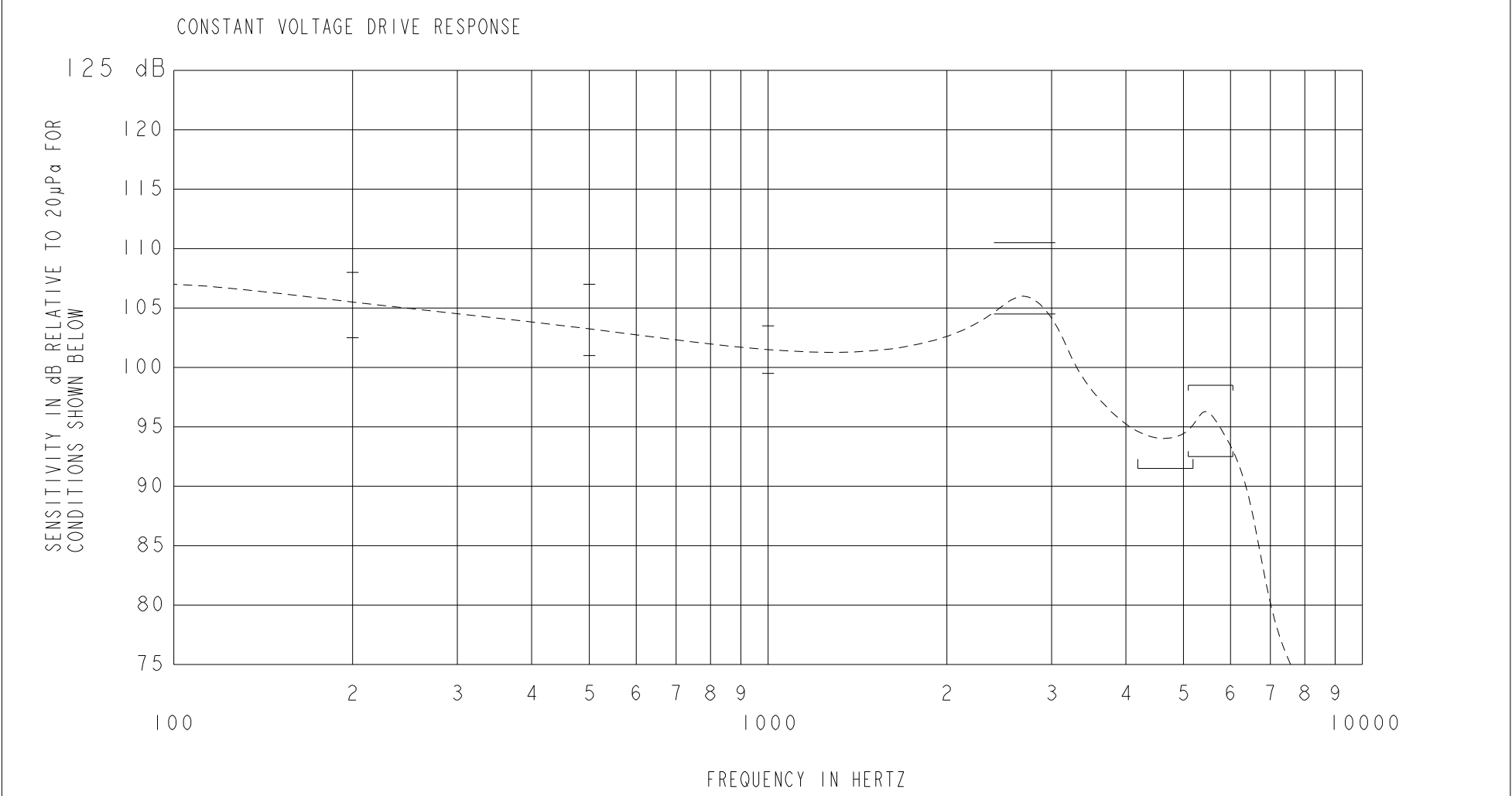
TITLE: RECEIVER  
OUTLINE DRAWING

RAB-32057-000  
SHT 1.1

DR. BY	DATE
OQ	8-8-13
CK. BY	DATE
GJP	8-9-13
APP. BY	DATE
GJP	8-9-13

KE111ASIZE.FRM

Rev: B



ACOUSTICAL

SENSITIVITY  
DEVICE WILL PRODUCE THE SPL LISTED BELOW WITH THE TEST  
CONDITIONS DESCRIBED IN TABLE 3. NOMINAL SENSITIVITY  
AT 1 kHz IS dB RELATIVE TO 20μPa. ALL OTHER VALUES IN  
dB RELATIVE TO THE SENSITIVITY AT 1 kHz.

LIMIT TYPE	FREQUENCY (Hz)	MINIMUM	NOMINAL	MAXIMUM
REL	200	+1.0	+4.0	+7.0
REL	500	-0.5	+2.0	+5.5
REF	1000	-2.0	101.5	+2.0
PEAK 1	2450-3050	+3.0	+4.5	+9.0
VALLEY	4200-5200	-10.0	---	---
PEAK 2	5100-6100	-8.0	-5.0	-2.0

TABLE 1.

TOTAL HARMONIC DISTORTION  
DEVICE WILL NOT EXCEED TOTAL HARMONIC DISTORTION LEVELS  
LISTED BELOW.

FREQUENCY (Hz)	DRIVE (Vrms)	LIMIT (%)
1/3 PEAK1 (TYP. 917)	0.180	3
1/2 PEAK1 (TYP. 1375)	0.180	3
1/3 PEAK1 (TYP. 917)	0.507	8
1/2 PEAK1 (TYP. 1375)	0.507	8

TABLE 2.

TEST CONDITIONS

NOMINAL SOURCE VOLTAGE	0.180 Vrms
SOURCE IMPEDANCE	< 1 Ω
TUBING	10 mm (.394) LONG, 1 mm (.039) ID.
COUPLER CAVITY	2 CC SIMULATED ANSI S3.7 TYPE HA-3,(IEC 60318-5)

TABLE 3.

ELECTRICAL

DC RESISTANCE	65 Ω ±10%
IMPEDANCE @ 500 Hz	90 Ω ±15%
IMPEDANCE @ 1 kHz	140 Ω ±15%
INDUCTANCE @ 500 Hz	19.8 mH TYPICAL

TABLE 4.

ISOLATION: THE CASE WILL BE ELECTRICALLY ISOLATED  
FROM THE COIL CIRCUIT

MECHANICAL

PORT LOCATION: 12S

SOLDER TYPE: ROHS COMPLIANT  
SAC305

TEMPERATURE  
OPERATING: SENSITIVITY WILL NOT VARY MORE THAN  
+1/-3 dB FROM -17°C TO 63°C  
STORAGE: -40°C TO 63°C

	Revision	C.O. #	Implementation Date	RELEASE LEVEL	REVISION
	C	PI0001411	5-2-17	Active	C
	B	C2.226714	3-26-15		
	A	CI0115003	8-8-13		
	KNOWLES CORPORATION	WHEN TEST LIMITS ARE USED TO ESTABLISH INCOMING INSPECTION ACCEPTANCE/REJECTION CRITERIA, CORRELATION OF TEST EQUIPMENT WITH KNOWLES IS ALSO REQUIRED FOR ELIMINATION OF EQUIPMENT AND TEST METHOD VARIATION			DR. BY
OQ					8-8-13
TITLE: RECEIVER  PERFORMANCE SPECIFICATION			CK. BY	DATE	
			GJP	8-9-13	
			APP. BY	DATE	
			RAB-32057-000	GJP	8-9-13
			SHT 2.1		